



www.cymco.co.kr

Frontrunner of Chip Conveyer

CHANGRYONG MACHINERY



We will always be there for our customers

Chang Ryong Machinery Company has made remarkable contributions to the conveyor industry since 1989. Consistent R&D and excellent cutting edge technology made the contribution possible.

신뢰할 수 있는 진심으로 고객과 함께 하겠습니다

창용기계공업사는 89년 창립 이래 끊임없는 연구개발을 통하여 축적된 우수한 기술력과 개발력을 바탕으로 칩 컨베이어 산업에 획기적인 공헌을 이룩하였습니다.

Contents

- 04 CEO Message
- 05 History
- 06 Vision
- 07 Mission
- 08 Business Area
- 09 Biggest Conveyor Strong Point
- 10 Biggest Conveyor
- 12 Screw Conveyor
- 14 Automatic CNC Lathe Chip Conveyor
- 15 Special Conveyor
- 17 Applications
- 20 Performance Data
- 21 Customer
- 22 Working Process

CEO Message

We put the top value on our customers' satisfaction.

창용기계공업사가 고객에게 줄 수 있는 최고의 가치를 생각합니다



Chang Ryong Machinery Company has produced a kind of machine tool, chip conveyor for use at home and abroad since its establishment in 1989. Therefore the company has reached outstandingly high levels of technological efficiency over the years because of the experience gained by our highly skilled field workers. We also always meet our customers' demands in terms of best price, prompt delivery and quality control. Recently, we have begun producing large sized chip conveyors for large sized processing machines, main chip conveyors for transferring the chips to chip-processing locations, and a screw type conveyor as a primary product.

저희 昌龍機械(창용기계)는 89년 창업 이래 국내 · 외에서 생산되는 각종 공작기계의 CHIP CONVEYOR를 생산해온 회사로서 왕성한 영업활동과 추진력을 바탕으로 다년간의 경험과 풍부한 기술, 유능한 기능인력을 확보하여 최적의 가격, 납기, 품질로 수요자의 요구에 부응하고 있습니다. 최근에는 해양조선, 풍력발전기 및 항공 산업의 대형물 가공기계에 적용되는 대형 CHIP CONVEYOR, 공장 내 각각의 가공 chip을 공장외곽의 Chip 처리장까지 이송하는 Main Chip conveyor, NC 및 CNC M/C에 적용되는 Conveyor를 Screw Type으로 개발 주력 제품으로 생산하고 있습니다.

대표



History

1989	Chang Ryong Machinery was established in 1989. Producing chip conveyor 창용기계공업사 설립, CHIP CONVEYOR 생산
1990	Moving to Sokjon-dong, Masan city. Shipping 100 units of chip conveyor 마산시 석전동으로 이전, CHIP CONVEYOR 100대 출하
1994	Moving to Namsan-dong, 601-16. Shipping 1000 units of chip conveyor 창원시 남산동 601-16으로 이전, CHIP CONVEYOR 1,000대 출하
1996	Shipping 2000 units of chip conveyor CHIP CONVEYOR 2,000대 출하
1999	Moving to Daewon-dong, Chang Won City 91-2 창원시 대원동 91-2번지로 이전
2001	Shipping 3000 units of chip conveyor CHIP CONVEYOR 3,000대 출하
2003	Moving to Shinchon-dong 192-57, Shipping 4000 units of chip conveyor, Our current CEO, Im Young Ho was appointed 창원시 신촌동 192-57번지로 이전, CHIP CONVEYOR 4,000대 출하, 현 임영호 대표 취임
2005	Shipping 5000 units of chip conveyor CHIP CONVEYOR 5,000대 출하
2006	Shipping 6000 units of chip conveyor CHIP CONVEYOR 6,000대 출하
2007	Shipping 7000 units of chip conveyor CHIP CONVEYOR 7,000대 출하
2008	Moving to Shinchon-dong 192-19, Shipping 8000 units of chip conveyor 창원시 신촌동 192-19 신축자가 공장으로 확장이전, CHIP CONVEYOR 8,000대 출하
2009	Shipping 8600 units of chip conveyor CHIP CONVEYOR 8,600대 출하
2010	Shipping 10000 units of chip conveyor CHIP CONVEYOR 10,000대 출하
2011	Extension of Assembly Line. Shipping 12000 units of chip conveyor 조립공장 증축 CHIP CONVEYOR 12,000대 출하



Vision

Creating
customers' value
based on designing
centered on users

사용자 중심의
최적화된 설계를 바탕으로 고객 가치창출

Products produced

Hinges, Screws, Belts, Mashers, centrally controlled
coolant tanks, 100% custom made production

Clients companies 2000

Total production number of conveyer belts

12,000 items (by the end of 2011)

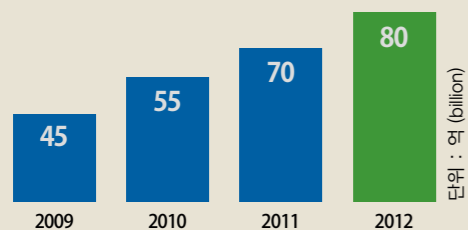
생산가능 기종

Hinge, Screw, Belt, Mash, 중앙집중식 Coolant tank 등,
100% 고객 맞춤 제작

고객사 2000 개사

컨베이어 총 생산 개수 12,000 대 (2011년 말)

Sales



Mission

Maximizing
the customers'
productivity through
more advanced technology

더 높은 기술력으로
고객의 생산성 극대화 추구

Technology

Offering the highest quality
of products through
developing new technology

신기술 개발을 통한
최고 품질의 제품을 공급

Speed

Providing the best and
the fastest service for our
customers' convenience

고객의 가장 가까운 곳에서
가장 빠르게
최적된 서비스 제공

Human efforts

Our first priority being
consistent self development
and pursuing customers' value

끊임없는 자기 개발과
고객 가치 추구를
가장 먼저 생각

Very competitive Technology by elevated working experiences

Chang Ryong Machinery is leveling up its technology with consistent business from super large sized machine tool maker like Hankook Machine Tool • DSK Machinery.

Also, we are able to establish strong partnership with top Korean machinery maker : Hyundai WIA • Doosan Infracore • S&T Dynamics • Hanhwa. It is attributable to our excellent cutting edge technology.

폭 넓고, 차원 높은 경험으로 얻어진 강력한 기술력

현대 WIA, 두산 인프라코어, S&T 중공업, 한화 등과 같은 국제적인 경쟁력을 가진 기업과 한국공작기계, 디에스케이기계와 같은 초대형 공작기계 메이커와의 지속적인 거래로 창용기계공업사의 기술력을 한 단계 더 높여가고 있습니다.

Business Area

Biggest
Conveyor

Screw
Conveyor

Automatic
CNC Lathe
Chip Conveyor

Special
Conveyor

Applications

Biggest Conveyor Strong Point

Chang Ryong Machinery is keeping its products in good condition by the continued R&D.

생산공정에 대한 지속적인 연구와 노력으로 제품의 신뢰성과 내구성을 최고로 유지하고 있습니다.



1 Bearing
Very solid bearing structure
/ Chain inspection window
견고한 베어링 구조 /
체인 점검창



12 Chain Cover Design
Checking up driving member chain
/ Designing cover for check up
구동부 체인 점검 /
확인용 커버 디자인



11 Guide Design
Chain and Guide welding
for improving durability
내구성 향상을 위한 체인 /
가이드 용접



10 Checking System
Maintaining driving part
and designing for check up
구동부 보전 /
점검을 위한 설계



2 Chain Cover
Attachment of chain covers
to prevent chip curdling
칩 엉킴 방지
체인커버 부착



9 Roller
Heat treated roller driving structure
using high frequency waves
고주파 열처리 롤러
구동부 구조



3 Frame
Solid frame / Designing for
portability and assembly
견고한 프레임 /
이동, 조립 고려 설계



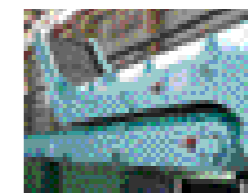
8 Checking System
Checking up driving parts:
maintenance window
구동부 점검 및 보전창



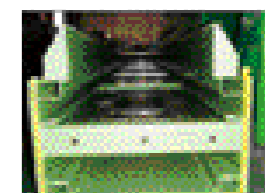
4 Tailored Design
Custom designing and production
of large sized conveyors
대형 컨베이어
맞춤 설계, 제작



5 Pit Space
Custom built installing /
Obtaining, maintaining space
피트 맞춤 설치 /
보전공간 확보



6 Moving Roller
Check-up window for separation
style of prevention and
attachment of portable roller
분리형 보전 점검창 /
이동용 롤러 부착



7 Rail
Frame: Attachment of
heat treated rail using high
frequency waves
FRAME 고주파 열처리
레일 부착

Biggest Conveyor



Chip Conveyor (CNC Horizontal Lathe) For Large Sized The Lathe
User SPP Energy, Unison, SeAH Besteel, Seohan ENP, Doosan



Chip Conveyor For Large Sized The Vertical Lathe
User SPP, SAS, EM Korea, Seohan ENP, Unison, SeAH



Drill Master Chip Conveyor
User Daeyang Engineering



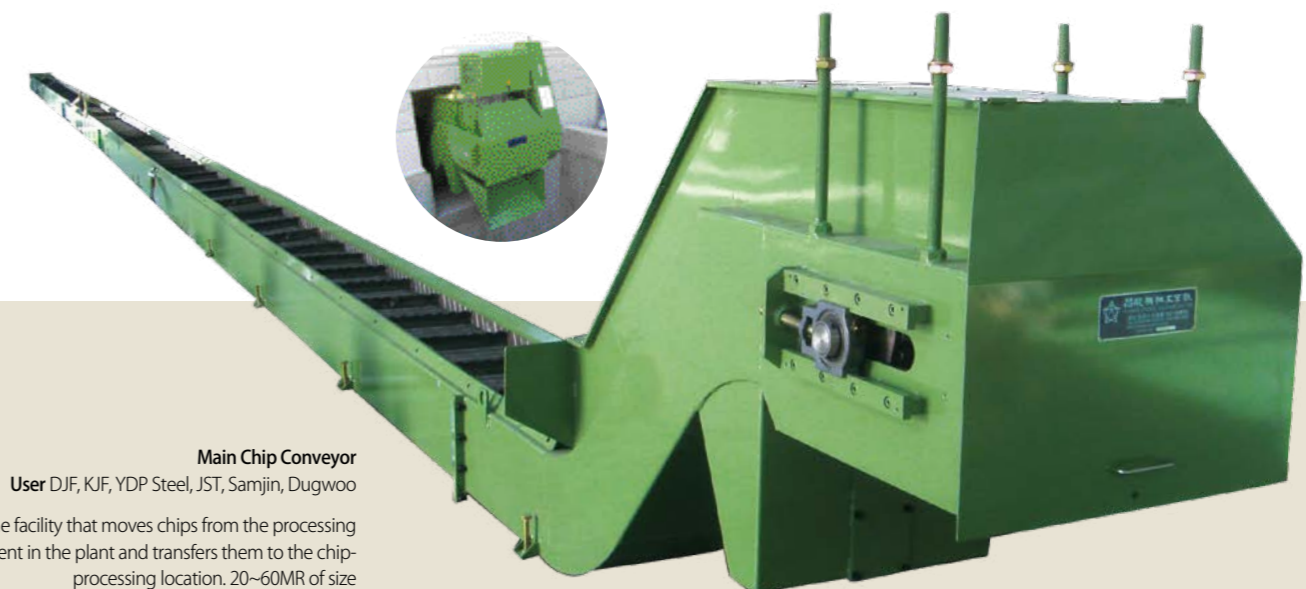
Chip Conveyor For Large Sized The Lathe
User Hyundai steel



Chip Conveyor For Large Sized The Horizontal Lathe
User SPP, Unison, Seohan ENP

Our products are applicable to various processing machinery. They don't have anything stuck and are also effective with large volumes of chips. After fabrication, the product goes through painting and the assembly line. Finally, heat treatment should be implemented due to the abrasion of the rail, one of the reasons for breakdown.

다양한 가공기계에 적용이 가능한 칩 컨베이어입니다. 칩의 끼임현상이 없으며 많은 양의 칩 처리에 효과적입니다. 제관공정이 끝난 후 도장작업이 진행되며 도장이 완료되면 조립공정이 이루어집니다. 칩컨베어의 고장발생 원인의 대부분이 Rail의 마모에 의해서 발생되므로 열처리작업을 필히 거치게 됩니다.



Main Chip Conveyor
User DJF, KJF, YDP Steel, JST, Samjin, Dugwoo

The facility that moves chips from the processing equipment in the plant and transfers them to the chip-processing location. 20~60MR of size

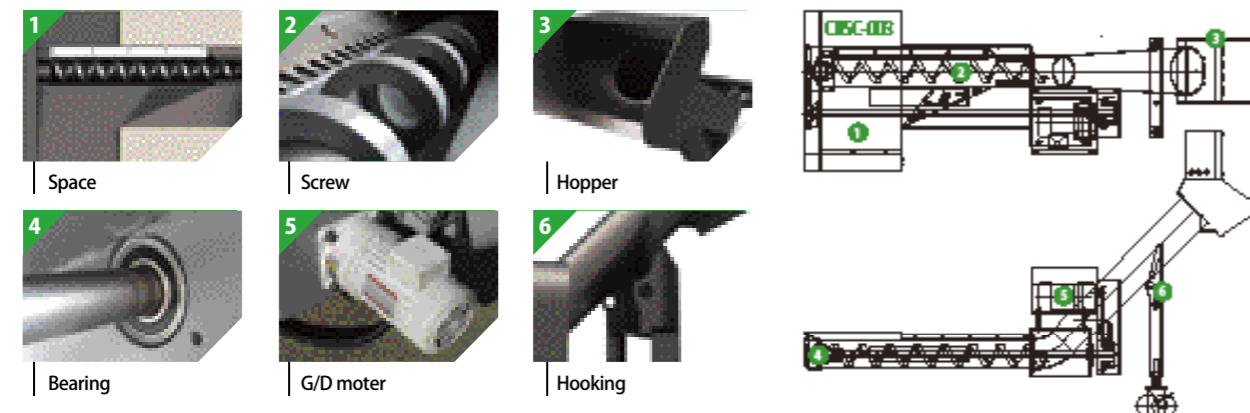
Screw Conveyor



Realizing no industrial disaster caused by Chip
Applied company : Hyundai Wia, Doosan Infracore, DMC, SMEC,
Hanhwa, Nexturn, Tsugami, Nomura

칩에 의한 산재사고 : 제로화 구현
적용기종 : 현대 위아, 두산 인프라코어, DMC, SMEC, 한화, 넥스턴, 쓰가미, 노무라

Detail



Advantage



Automatic CNC Lathe Chip Conveyor



Automatic CNC Lathe Chip Conveyor
User Tsugami, Nomura, Sincom, Star, Nextun, Hanhwa

Our product is a kind of chip conveyor applicable to automatic lathe produced home and abroad, especially working out better in very effectively installed space. Furthermore, it can be applied to removing chip and transferring products.

국내 · 외에서 생산되는 자동선반에 적용되는 칩 컨베이어로서 효율적인 설치공간에서 최고의 성능을 발휘하며 Chip 제거, 제품이송에 적용하고 있습니다.



Automatic CNC Lathe Screw Conveyor
User Nomura, Hanhwa



Transferring Products Belt Conveyor
User Nextun, Hanhwa, Tsugami, Nomura

Special Conveyor



Transferring Products Conveyor
(Sawing M/C)



Chip Conveyor (Band Sawing M/C)
User Wooyoung industry



Chip Conveyor (Sawing M/C)
User Wooyoung industry

Special Conveyor



Mesh Conveyor For Forging Machine



Magnetic Block Conveyor



Magnetic Block Conveyor
User S&T Heavy Industry

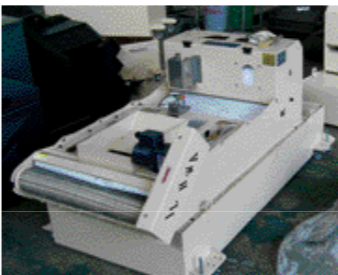
Applications - Coolant Tank



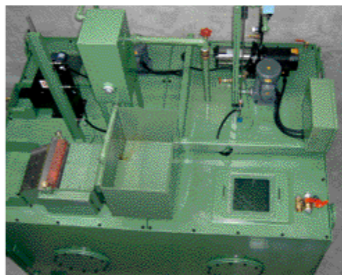
Lubication Tank
User STX, Hyundai Heavy Industry, Doosan Heavy Industry



Concentrated Coolant Device
User Mando, Sinhwa ENG



Coolant Tank
User DSK, STX, Hyundai, Doosan

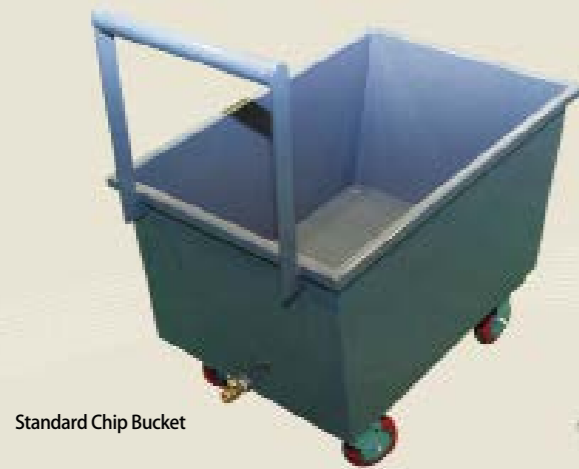


Coolant Tank
User STX, Hyundai Heavy Industry, Hwanwoong Precision,
Hyundai Industrial Machinery, DSK



User S&W

Applications - Chip Bucket



Standard Chip Bucket



Rotating Chip Bucket



Large Chip Bucket



Rotating Chip Bucket

Standard Chip Bucket

Chip Bucket applicable to small sized machine tools.
Very easy to reuse cutting oil thanks to the attachment of punching plate and drain valve in the lower part.

소형 공작기계에 적용 가능한 칩 버킷
하부에 PUNCHING PLATE 부착 및 DRAIN VALVE가
부착되어 있어 절삭유의 재활용이 용이함.

Rotating Chip Bucket

Bucket rotating 270° by attachments at both side of the bucket. Easy to clean the chips compared to other commonly used chips. Very easy to reuse cutting oil thanks to the attachment of punching plate and drain valve in the lower part.

버킷 양쪽으로 베어링을 부착하여 버킷을 270° 회전가능.
일반형 칩 버킷에 비하여 칩 청소가 용이함.
하부에 PUNCHING PLATE 부착 및 DRAIN VALVE 가 부착되어 있어
절삭유의 재활용이 용이함.

Large Chip Bucket

Manufacturing using 20ton of steel plate.
Applicable to processing large volume of chips.
Easy to use with attached lug able to flip over forklift truck feet entrance and the chip bucket.

20T 정도의 철판을 이용하여 제작.
대용량 Chip 처리에 적용.
하부에 지게차 발 삽입구 및 칩 버킷을 용이하게
뒤집을 수 있는 LUG가 부착되어 사용하기 편함.

Rotating Chip Bucket

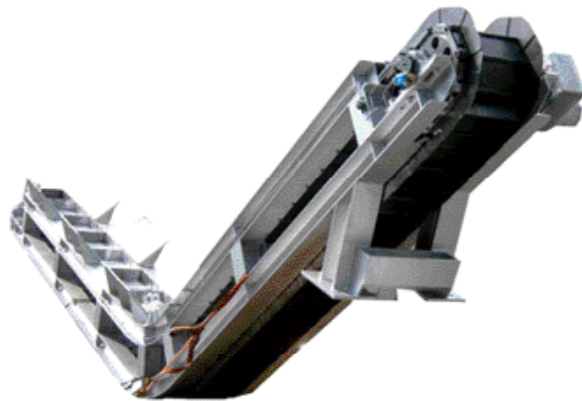
Bucket rotating 270° by attachments at both side of the bucket. Easy to clean the chips compared to other commonly used chips. Very easy to reuse cutting oil thanks to the attachment of punching plate and drain valve in the lower part. The structure capable of being carried by a forklift truck.

버킷 양쪽으로 베어링을 부착하여 버킷을 270° 회전가능.
일반형 칩 버킷에 비하여 칩 청소가 용이함. 하부에 PUNCHING
PLATE 부착 및 DRAIN VALVE 가 부착되어있어 절삭유의 재활용이
용이함. 지게차 운반이 가능한 구조

Performance Data

Chang Ryong Machinery thoroughly manages all the processes from sales, design and shipment to customer's place of operation. We offer very elevated customer satisfaction services to deal with their needs better.

창용기계공업사는 영업, 설계, 생산에서 출하 그리고 고객의 장비운용에 이르기까지의 전 과정을 끊임 없이 점검합니다. 고객과 가까운 거리에서 고객의 불편을 해소시키며 항상 고객 만족을 위해서 노력하여 고객들에게 기억될 수 있는 기업으로 성장하기를 원합니다.



POSCO



STX



Unison



Hankook Machine Tools



STAR



S&T



Oksan IMT



POSCO



Sehan ENP



SeAH Bsteel

Customer

Main Business Partners	
HYUNDAI WIA	· POWER UNIT & CHIP CONVEYOR · INTENSIVE COOLANT SYSTEM · CHIP CONVEYOR FOR WASHING
HYUNDAI MOBIS	· POWER UNIT & CHIP CONVEYOR · CONVEYOR FOR TRANSFERING AUTO PARTS · CONVEYOR FOR PROCESSING · BED FOR EXCLUSIVE USAGE AND EXTRA EQUIPMENT
SMEC	· MASS PRODUCTION FOR SAMSUNG MACHINE TOOL, ALL KINDS OF CHIP CONVEYOR · INTENSIVE CONVEYOR(OWN FACILITIES)
HANKOOK MACHINE TOOLS Co.,Ltd.	· LARGE SIZED SHELVEING CHIP CONVEYOR · NC LATHE (PROTURN, DYNATURN MODEL) · POWER UNIT
DOOSAN INFRACORE	· LYNX MODELLED CHIP CONVEYOR · DEVELOPING MODELLED CHIP CONVEYOR
HANHWA MACHINE	· TC, TK MODELLED CHIP CONVEYOR · SS, NP MODELLED CHIP CONVEYOR · QT - 8N, 15N, 28N CHIP CONVEYOR (HINGDE TYPE)
HYUNDAI Precision & Engineering	· AJV 32/35 SPRING CONVEYOR · H-400, H-500, H-630 CHIP CONVEYOR
DOOWON Heavy Industrial Co.,Ltd.	· DMC-60 MODELLED CHIP CONVEYOR · POWER UNIT
HYOSUNG Heavy Industrial Co.,Ltd.	· INTENSIVE CHIP CONVEYOR FOR ITS OWN FACILITIES
SAMIK IND Industrial	· COOLANT SEPARATOR
HYUNDAI STEEL	· LARGE SIZED COOLANT SEPARATOR · LAGE SIZED CHIP CONVEYOR
HYUNDAI MOTOR	· INTENSIVE CHIP CONVEYOR FOR ITS OWN FACILITIES
DOORAE METAL	· ROLLER CONVEYOR FOR TRANSFERING AL WHEEL · CONVEYOR FOR PROCESSING AL CHIP
HanGook Special Brick Co.,Ltd.	· CONVEYOR FOR TRANSFERING BRICKS
DONGHWAN Industry	· WATER CHILLER (FOR LIMOUSINE BUS)
Korea GMB Industrial Co.,Ltd.	· CHIP CONVEYOR(FOR ITS OWN FACILITIES)
Sungsanam Deco Co.,Ltd.	· NO NEED TO CLEAN CHIP CONVEYOR
H.S.D Engine Co.,Ltd.	· MAIN CONVEYOR
EXTRA	· ALL KINDS OF POWER UNIT & CHIP CONVEYOR
HYUNDAI Industrial Machinery Co.,Ltd.	· LARGE SIZED CHIP CONVEYOR (INCLUDING BORING M/C)
DSK MACHINERY Co.,Ltd.	· LARGE SIZED CHIP CONVEYOR (INCLUDING BORING M/C)
SHINIL Industrial Co.,Ltd.	· LARGE SIZED CHIP CONVEYOR, DRILLING M/C
Hwanwoong Co.,Ltd.	· LARGE SIZED CHIP CONVEYOR
DAEHEUNG Machinery Industrial Co.,Ltd.	· LARGE SIZED CHIP CONVEYOR(LARGE SIZED SHAFT PROCESSING)
GUSAN ADM	· CHIP CONVEYOR
WIA Co.,Ltd. JungDong Plant	· CHIP CONVEYOR
NDT ENG Co.,Ltd.	· CHIP CONVEYOR
DAEYANG ENGINEERING Co.,Ltd.	· LARGE SIZED CHIP CONVEYOR
NAMBUK Co.,Ltd.	· DRUM CHIP CONVEYOR
MARINETECH Co.,Ltd.	· CHIP CONVEYOR
MANDO Co.,Ltd.	· NO NEED TO CLEAN TYPE CHIP CONVEYOR
HAEWON Machinery Industrial Co.,Ltd.	· CHIP CONVEYOR
GEUMHA Machinery	· CHIP CONVEYOR
DONGYANG Industry Co.,Ltd.	· CHIP CONVEYOR
SAMSUNG Electronic Co.,Ltd. (Gu-Mi)	· CHIP CONVEYOR
UNISON Co.,Ltd.	· CHIP CONVEYOR(LARGE SIZE)
WONIL Co.,Ltd.	· CHIP CONVEYOR

Machine Tool Producers		
HYUNDAI Industrial Machinery Co.,Ltd	HYUNDAI WIA	DOOSAN INFRACORE
S&T Dynamics	HWACHEON Co.,Ltd.	NEXTURN
DSK MACHINERY Co.,Ltd.	HANHWA	DMC
SMEC		
Large Sized Structure Fabrication Manufacture		
H.S.D ENGINE Co.,Ltd.	STX ENGINE	HYUNDAI ENGINE
EUNKWANG Industrial Co.,Ltd.	HYUNDAI Industrial Machinery Co.,Ltd.	HWANWOON Precision Co.,Ltd.
HAEWON Machinery Industry Co.,Ltd.	GIRIM Corporation	BESTWAY Co.,Ltd.
SOOSUNG Precision Machinery Co.,Ltd.	SPP Heavy Industry	HANIL Precision Ind. Co.,Ltd.
YONGHYUN B.M Co.,Ltd.	UNISON Co.,Ltd.	HYUNJIN MATERIALS Co.,Ltd.
SEONAM Industrial Machinery Co.,Ltd.	DAEHEUNG Engineering&Machinery Co.,Ltd.	SAMJUNG GONGYEONG Co.,Ltd.
DONGJIN PM TECH Co.,Ltd.	DAESANG	DAESHIN Technology Co.,Ltd.
POSCO	CERA Precision Industries Co.,Ltd	SEJIN Precision Machinery Co.,Ltd.
DSME	HY Precision	HYUNDAI Heavy Industries
STX Construction	DOOWON Heavy Industrial Co.,Ltd.	DOOSAN ENGINE
HYUNDAI STEEL	SPP ENERGY Co.,Ltd.	SEOHAN ENP
SeAH BESTEEL	YDP STEEL	TATA DAEWOO
SKF		
Deep Hole Fabrication Manufacture		
DAEYANG Eng.	DONFSHIN DEEP HOLE	HYUNDAI DEEP HOLE
KUMHWA Machinery Co., Ltd.	SHIN-IL MACHINERY Co.,Ltd.	DAMING SOLUTION Co.,Ltd.
HYUNWOO PETRO TECH	SUNGJIN GUN DRILLI	DAE MYUNG MACHINERY Co.,Ltd.
HANTEK Co.,Ltd.	G-S CORE(GUSAN Industrial Machinery)	BOKYUNG Metal Co.,Ltd.
HYUNSEUNG GNT	SANGIN Precision	DJF Co.,Ltd.
HANTEK	SAS	KJF
Vendors for Improted Machine Tool		
MAZAK	STAR	CINCOM
Tsugami	Nomura	
Vendors For Manufacturing Land and Offshore Crane		
MYUNGSHIN Heavy Industry Co.,Ltd.	SEWOONG Precision Industry Co.,Ltd.	DONGYANG Heavy Industry Co.,Ltd.
D.M.C Co.,Ltd.	YEONGSAN Heavy Industry Co.,Ltd.	SUNGCHANG Industrial Machinery

The technological support for our customers will be going on to meet their demand.

All the dominant technology and prominent production system is attributable to our capable employees. Under guaranteed customer service we develop custom built products and provide technical service after delivering it. We include support for a variety of employee training services. With it, the technological innovation of Chang Ryong will be continued and increased for the benefit of our customers.

창용기계공업사의 독보적인 기술과 생산시스템을 더욱 돋보이게 하는 것은 바로 진심으로 행동하는 창용기계공업사의 직원입니다. 고객이 원하는 제품의 개발, 각종 문제에 대한 치밀한 기술적 대응, 다양하고 철저한 교육지원 서비스까지 고객의 안목으로 갖춰진 완벽한 서비스 시스템이 창용기계공업사의 바탕입니다. 고객과 함께 한발 더 앞서가기 위한 창용기계공업사의 기술 지원은 앞으로도 계속 될 것입니다.

Working Process



Business



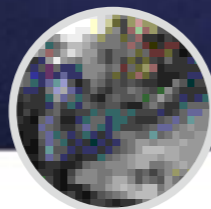
Design



Laser/Bending



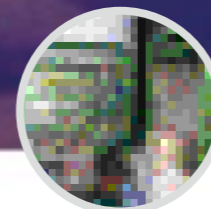
Processing



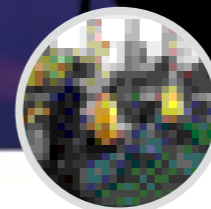
Canning



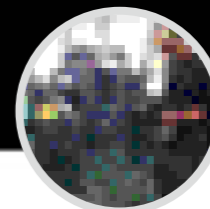
Painting



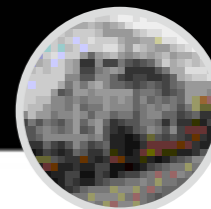
Product



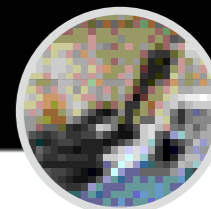
Assembling



Testing



Shipping



Installation





192-19, Shinchon-dong, Seongsan-gu,
Changwon, Gyeongnam, Korea
Tel. 82-55-286-4745 Fax. 82-55-286-4457

경남 창원시 성산구 신촌동 192-19번지
Tel. 055)286-4745 Fax. 055)286-4457